

44.41 mg product (29.1 g total, solution)
 12.74 mg standard (trimethoxybenzene, 99.0% purity)
 PROTON CDC13

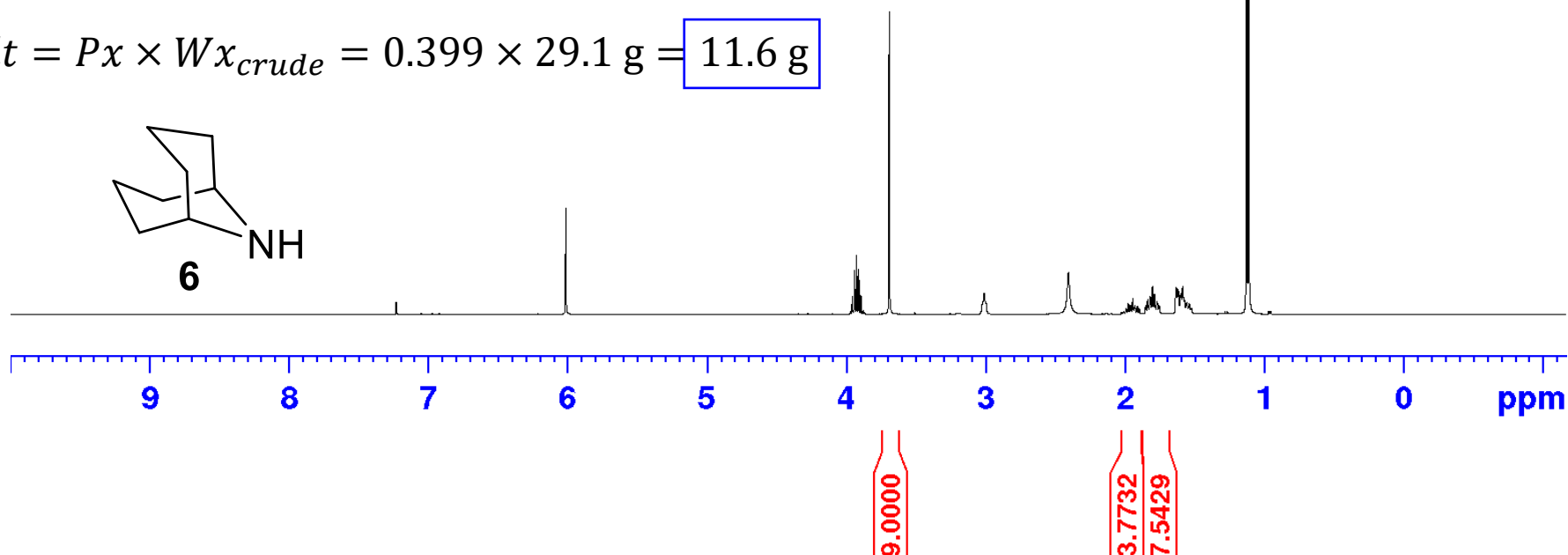
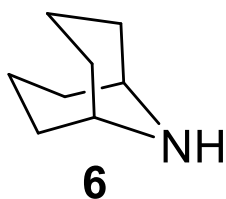


$$Px = \frac{Ix}{Ical} \times \frac{Ncal}{Nx} \times \frac{Mx}{Mcal} \times \frac{Wcal}{Wx} \times Pcal$$

$$Px = \frac{3.7732}{9.0000} \times \frac{9}{2} \times \frac{125.22 \text{ gmol}^{-1}}{168.19 \text{ gmol}^{-1}} \times \frac{12.74 \text{ mg}}{44.41 \text{ mg}} \times 0.990 = 39.9\%$$

$$Px = \frac{7.5429}{9.0000} \times \frac{9}{4} \times \frac{125.22 \text{ gmol}^{-1}}{168.19 \text{ gmol}^{-1}} \times \frac{12.74 \text{ mg}}{44.41 \text{ mg}} \times 0.990 = 39.9\%$$

$$Wpdt = Px \times Wx_{crude} = 0.399 \times 29.1 \text{ g} = 11.6 \text{ g}$$



F2 - Acquisition Parameters
 Date_ 20220729
 Time 13.01 h
 INSTRUM Avance
 PROBHD Z163739_0288 ()
 PULPROG zg
 TD 65536
 SOLVENT CDC13
 NS 10
 DS 0
 SWH 7812.500 Hz
 FIDRES 0.238419 Hz
 AQ 4.1943040 sec
 RG 13.9716
 DW 64.000 usec
 DE 11.40 usec
 TE 298.0 K
 D1 30.00000000 sec
 TD0 1
 SFO1 400.1318006 MHz
 NUC1 1H
 P1 7.23 usec
 PLW1 23.42000008 W

F2 - Processing parameters
 SI 65536
 SF 400.1300204 MHz
 WDW EM
 SSB 0
 LB 0.20 Hz
 GB 0
 PC 1.00